

# MAXXAIR<sup>®</sup> VENT CORP. WINDOW/MAXX INSTALLATION INSTRUCTIONS



## Tools Required for Installation:

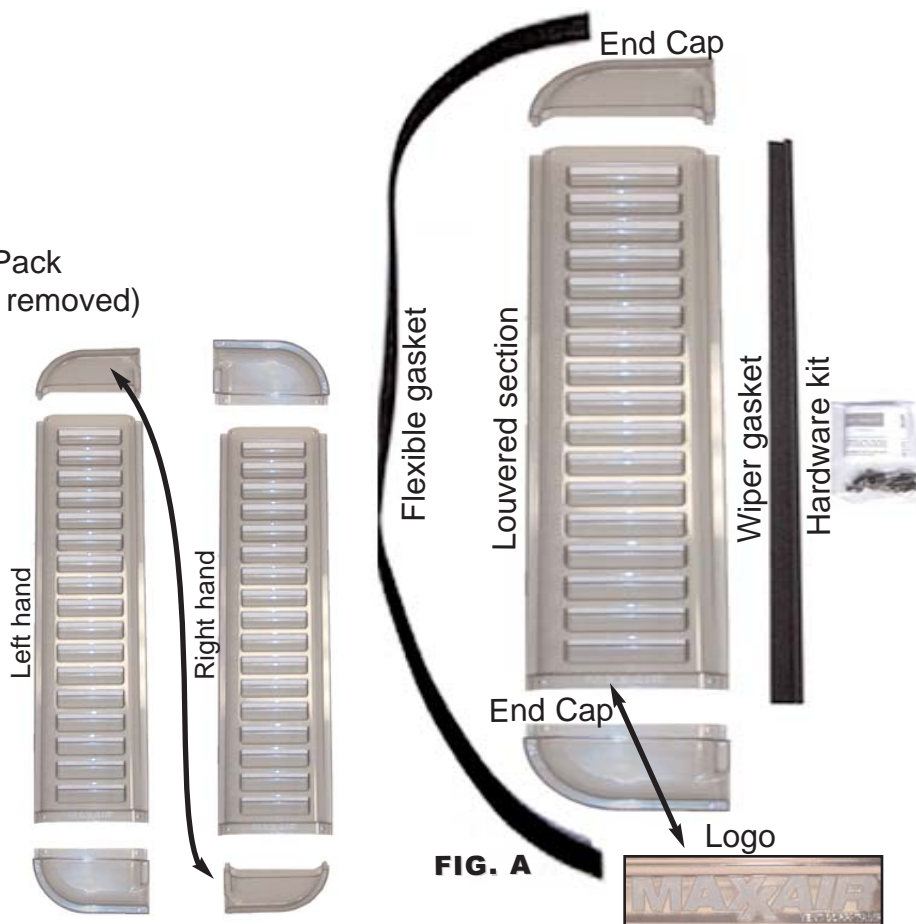
- Drill and Bits - 3/16", 1/8", 5/32"
- Masking Tape
- Hacksaw (fine tooth blade)
- Tape Measure
- Pliers
- Phillips Head Screwdriver
- Scissors
- Pencil
- Utility Knife



## Package Contents:

- 1 - Long flexible gasket
- 1 - Short wiper gasket
- 1 - Top end cap
- 1 - Bottom end cap
- 1 - Middle (Louver) section
- 1 - Stainless Steel Hardware Pack
- 4 - Plastic retainer pins (to be removed)

Your new Window/Maxx is shipped as a left hand sliding window vent as viewed from the exterior of your vehicle. To convert it to a right hand sliding window vent, simply reverse the top and bottom end caps. Always be sure that the MaxxAir engraved label is at the bottom of the Window/Maxx assembly or rain will enter because the louvers would be upside down. This logo is located at the bottom of the louvered section. (FIG. A)



## Stainless Steel Hardware Kit Contents:

- 1 - Interior Stop Pin
- 7 - #6 x 1 1/4" sheet metal screws
- 4 - #6 square nuts
- 4 - #6 x 3/8" machine screws
- 7 - Stand-off spacers



# 1 Retainer Pin Removal

Remove the plastic retainer pins used in shipping that are located on each end cap. Using pliers, pinch the end of the pin together and push them from the inside out. These may also be nipped off with appropriate diagonal cutters. Discard them after removal. (FIG. B)

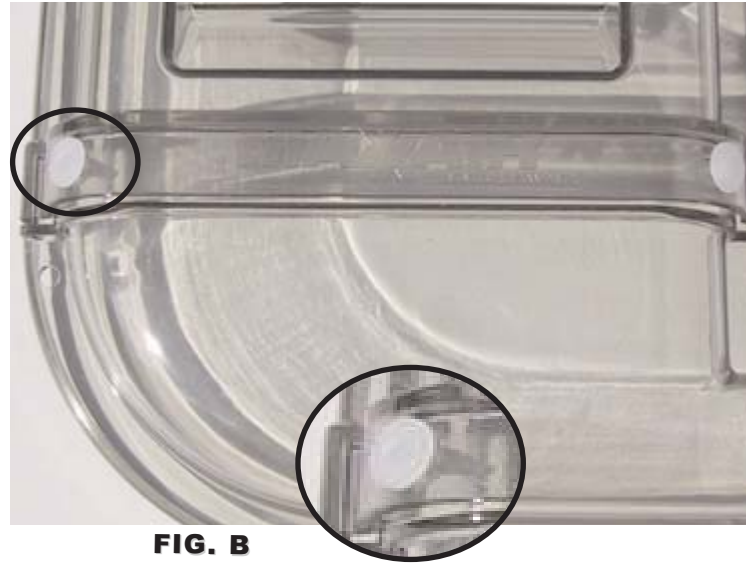


FIG. B

# 2 Measure Your Window

Measure the overall outside window frame height and record that dimension. Be certain to measure from the outside edge of the top to the outside edge of the bottom. (FIG. C)

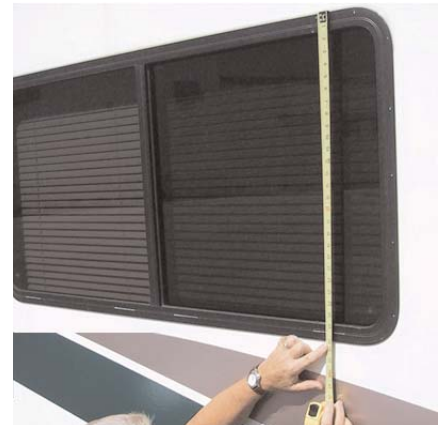


FIG. C

# 3 Note Size on Decal

Reading from the outside as shown in FIG. D, locate the measured size that is equivalent to your recorded dimension on the removable decal that is located on the lower section of the Window/Maxx. Using a crayon or fine marker, mark that dimension on the outer surface of the louver.

**Important Note:** This measuring decal automatically sizes your assembly to be  $\frac{3}{8}$ " shorter than your actual window height to allow a  $\frac{3}{16}$ " margin from the edge of the Window/Maxx to the edge of your metal frame. This decal is NOT the same size in inches as a standard ruler. DO NOT out-guess the placement of your mark! For example, if your window frame height is  $25 \frac{1}{2}$ ", select  $25 \frac{1}{2}$ " on the decal. (FIG. D)

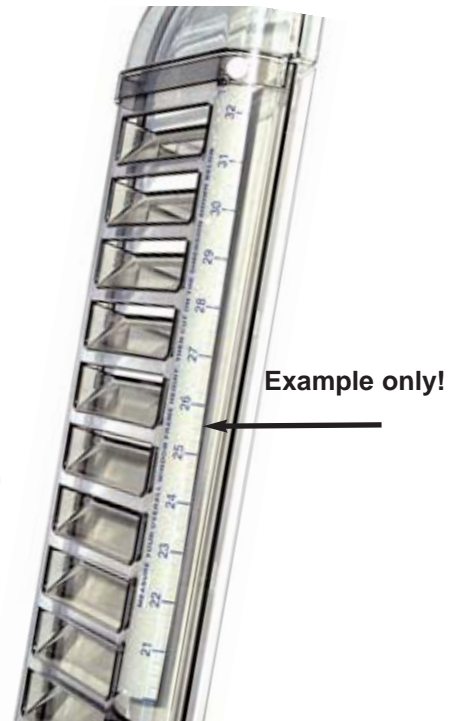


FIG. D

## 4

### Tape and Cut Louver

It may be helpful to apply masking tape from your mark and across the width of the louver for use as a guide in cutting. (FIG. E) Trim the Window/Maxx to size by removing the **top end cap** and squarely cutting off the excess louver using a hack saw. **Do not cut the end with the MaxxAir Logo.**

Make sure you are using the dimension on the removable decal.

Once the louver is cut to size (if necessary) proceed to step 5.

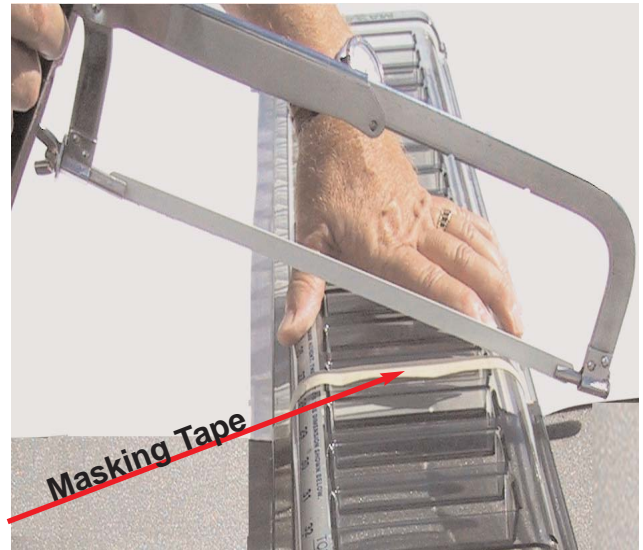


FIG. E

## 5

### Attach End Caps

First, determine if you want a right or left hand assembly. Place the louver section with the MaxxAir logo at the bottom. Note that the bottom already has 2 pre-drilled holes. Use the top end cap as a drill guide. Position it as in FIG. F and drill two 3/16" diameter holes in the top of the louver. Fasten the top and bottom end caps to the louvered section using the #6 x 3/8 machine screws mounted through the exterior with the nuts mounted to the interior. (FIG. G) NOTE: Always be sure the MaxxAir logo is at the bottom of the final assembly.



FIG. F

Interior of end cap



Bottom end cap

FIG. G

## 6 Drill Mounting Holes in Louver

Drill three additional, equally spaced mounting holes in the side flange of the louver section using the 3/16" drill bit. This is the side adjacent to the round edges of the end caps. These holes are used to fasten your Window/Maxx to the window frame. (FIG. H)



FIG. H



Location of 3 holes

## 7 Mark Mounting Holes on RV Window Frame

The installation shown here is for a right hand Window/Maxx. Without installing any gaskets, place the assembled Window/Maxx over your sliding window leaving approximately 3/16" space around the outside edge of the window frame. This provides enough flat surface to affect a good gasket seal. Pencil mark through all seven 3/16" mounting holes - three of which you just added and 2 per end caps. (FIG. I)



FIG. I

## 8 Drill Holes in Window Frame

Set the Window/Maxx aside. Drill seven 1/8" holes at the pencil marks located on the aluminum window frame (FIG. J).

## 9 Measure Clearance for Wiper

### Please Note

*There are many styles of window frames - here are two important thing to consider:*

1. Some sliding window sections are encased in metal edge trim, some have plain glass edges. If your window has a trim on it's edge, measure to this metal trim when checking the clearance for the wiper gasket.

FIG J



## 9 Cont'd.

2. Some window frames are protruding styles that may contact the end caps and keep your Window/Maxx from fully seating against the window frame. This can be resolved by filing additional clearance on the end caps. Keep this in mind when measuring the 3/8" wiper clearance since filing additional clearance will cause the Window/Maxx to rest on your window frame.

Before attaching the wiper blade gasket to the Window/Maxx's straight side, check the clearance between the sliding window and the Window/Maxx louvered section. (FIG. K) Hold the Window/Maxx in place and measure the distance to your sliding window. A minimum of 3/8" space insures sufficient clearance for the wiper to flex and the window to properly slide when your Window/Maxx is installed. However; if the Window/Maxx is positioned too close to the sliding window (less than 3/8") you will need to install the Window/Maxx to your window frame using the stand-off spacers provided.

These spacers are installed using the seven #6 x 1 1/4 screws. (FIG. L) They do not slide over the screws. You must "thread" them in place. This feature is necessary to prevent the spacers from falling off during installation. NOTE! If spacers are required, no trimming of the flexible gasket "leg" will be necessary.

See No. 12 for details on installing the flexible gasket trim.

## 10 Cut Wiper to Size

Lay the Window/Maxx face down and place the short wiper gasket on your assembly with one end against the inside wall of either end cap per FIG. M. Using a pencil, mark the total overall length of the wiper gasket. Mark the wiper where it will fit snugly against the inside wall of the other end cap. (FIG. N) Place the wiper on a hard surface or overhang on the edge of a table. Cut the excess hard material using a hack saw and cut the excess soft material with scissors. Install this wiper firmly onto the Window/Maxx's straight side per step No. 11.

These areas may require filing to fit over ridges or protrusions



FIG. K

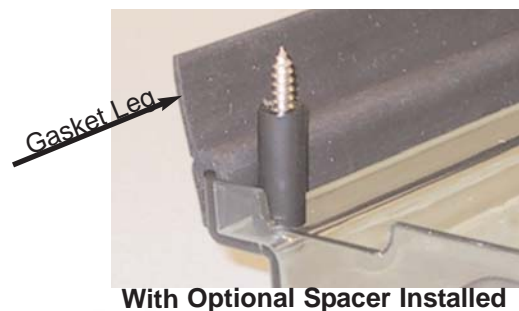


FIG. L



FIG. M

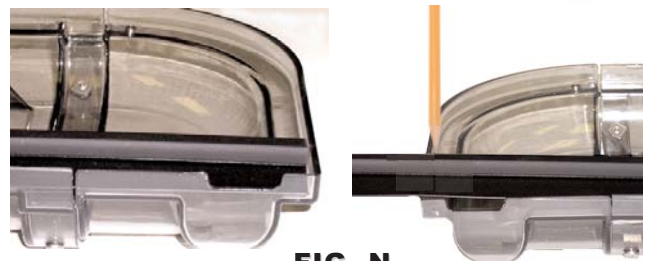
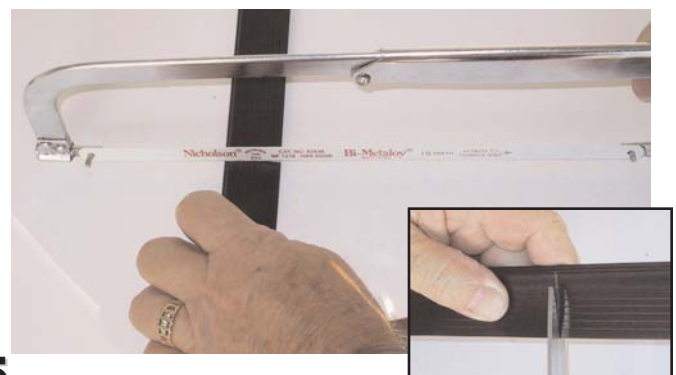


FIG. N



# 11 Install Wiper

The short wiper gasket should be applied with the flat side facing outward. This is the side that “wipes” the glass of the window. The rigid portion fits very tightly on the edge of the Window/Maxx and the flat side contacts the sliding window surface. (FIG. O) Start pressing the rigid channel onto the edge starting at one end and progressing toward the other end. This takes a fair amount of pressure. Do not be afraid to allow the flexible portion to fold over to allow for a better grip as you install. Also, the plastic Window/Maxx parts are strong enough to withstand the force. Note: If you find it difficult to install this gasket, you may apply a thin film of liquid soap (dish or hand soap) on the edge of the Window/Maxx.



FIG O

# 12 Install Flexible Gasket

Press the long flexible gasket the full length of the assembly on the curved outside edge of the Window/Maxx. Cut to length terminating at the inside wall on each end. (FIG. P) If your installation does not require stand-off spacers, cut off the longer flexible leg of this gasket with scissors prior to installation. You must remove the gasket from the Window/Maxx for ease of trimming. (FIG. R)



FIG P



FIG Q



FIG R

# 13

## Notch Gasket

If you have removed the longer flexible leg of the gasket, it will be necessary to cut 3 or 4 small drain notches in the bottom end of the soft part of this gasket. This will assist in water drainage due to condensation. Do not cut any notches in this gasket if it has been left intact because the flexible portion does allow for drainage.



**Trimmed & Notched**



**Untrimmed**

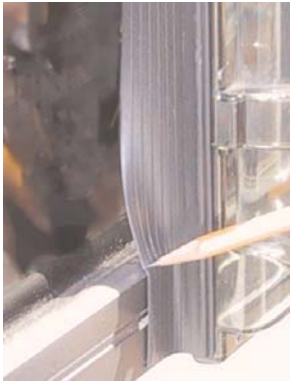
# 14

## Cut Wiper & Install Window/Maxx

Temporarily place the Window/Maxx in position on your window. Mark the soft portion of the wiper where it bends over the inside edges of the window - top and bottom. (FIG. S) With scissors, cut to allow the wiper to make contact with the sliding window as in the photo. (FIG. T) Install the Window/Maxx to the window frame with the seven #6 x 1 1/4" long stainless steel screws provided. **DO NOT OVER-TIGHTEN!!**

**DO NOT USE ANY LOCTITE FORMULAS ON THIS PRODUCT!**

**Mark Wiper Gasket**  
**FIG S**



**Cut Wiper Gasket**  
**FIG T**



## **NOTICE!!**

If your window is set back too far to engage the Wiper Gasket, please contact customer service to receive a Wiper Extension. This extension is simple to assemble and install. However, it comes full length and must be cut to size by the installer.

Thank you for purchasing MaxxAir Products. Please review our web site for information on other fine products at [www.maxxair.com](http://www.maxxair.com)

### **ASSEMBLY**

#### **WIPER BLADE TO WIPER EXTENTION**

Press the Wiper Blade Extrusion into the Wiper Extension as shown until they are fully locked together. Do not try to slide the two together from end to end. The parts fit together very tightly. Once assembled, (while following the Window/Maxx Inst. Sheet) cut the soft portion to the desired length with a sharp knife and the rigid parts with a fine toothed hacksaw. Trim rough edges with a razor blade. Press the extension / assembly on to Window/Maxx per instructions provided for that assembly. If needed, a thin film of liquid dish soap may be applied to these mating pieces for ease of assembly.

WIPER BLADE  
COMBINATION FLEXIBLE  
AND RIGID PLASTIC PART

PART# 10-20408  
WIPER EXTENSION / SPACER

WINDOW/MAXX LOUVER

COMPLETED ASSEMBLY

10-9-97

FOR ADDITIONAL INFORMATION, CALL MAXXAIR CUSTOMER SERVICE  
800-780-9893

**P7b**

# 15 Interior Stop Pin Installation

On the inside of your motor home, open the sliding window that the Window/Maxx is mounted to on the outside. Depending on your window configuration, this should be approximately 4". The Window/Maxx stop pin is inserted at the bottom of your window track to prevent the window from opening further. Do not open the window any wider than the wiper gasket permits. When installed, the stop pin should allow your window to open approximately 4". Drill a 5/32" hole for the stop pin at the proper location. Insert the stop pin.



**Your installation is now complete. Please read the Cautionary and Care information that follows. ENJOY THE FRESH AIR!**

## **CAUTION AND CARE OF THE WINDOW/MAXX**

This product has been manufactured using prime UV stabilized Polycarbonate resin for maximum toughness and durability. However, the use of non-compatible chemicals will cause cracking and product failure.

Please clean only with mild soap and water.

Do not use petroleum containing additives or solvent based products on any of the Window/Maxx components or its stainless steel hardware.

Listed below are some known chemical products to consider:

### **NON COMPATIBLE CHEMICALS - DO NOT USE THESE!**

Keytones, Esters, Acetone or other solvents, Halogenated Hydrocarbons, Amines, Aromatic Hydrocarbons, (Loctite formulas), or references to: chemicals that are not to be used on plastics.

### **GENERALLY COMPATIBLE CHEMICALS (Use in low concentration where possible)**

Acids, Alcohol, Alkalis, Aliphatic Hydrocarbons, Mild Soap solution (avoid strong Alkaline soap) Silicone Oil or Greases (avoid those containing Aromatic Hydrocarbons or other additives.)

**For additional assistance you may visit our website @ [www.maxxair.com](http://www.maxxair.com)**

**You may phone Customer Service 8 AM to 5 PM EST 1-800-780-9893**

**You may email us at [maxxair@maxxair.com](mailto:maxxair@maxxair.com)**



**5513 W. Sligh Ave. Tampa, FL 33634**